



Sd = 0 ... 4 mm



- Very high resolution
- Short response time
- Integrated current- and voltage output

**general data**

mounting type	shielded
measuring distance Sd	0 ... 4 mm
linearity error	± 160 µm
temperature drift	± 4% (Full Scale)

**electrical data**

voltage supply range +Vs	15 ... 30 VDC
current consumption max.	40 mA
short circuit protection	yes
reverse polarity protection	yes

**analog output 1**

output circuit	voltage output
output signal	0 ... 10 VDC
load resistance	> 1000 Ohm

**analog output 2**

output circuit	current output
output signal	4 ... 20 mA
load resistance at +Vs min.	< 300 Ohm
load resistance at +Vs max.	< 1000 Ohm

**mechanical data**

type	rectangular
housing material	brass nickel plated
dimension	12 mm
housing length	60 mm
connection types	connector M8

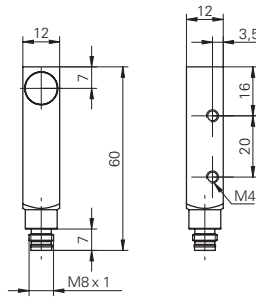
**ambient conditions**

operating temperature	-10 ... +70 °C
protection class	IP 67

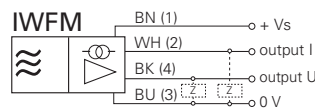
**accessories**

connectors	ESW 31A, ESG 32A
------------	------------------

**dimension drawing**



**connection diagram**



order reference	resolution	repeatability	response time (factory characteristic)
IWFM 12L9504/S35A	< 0,001 mm (stat.) < 0,005 mm (dynam.)	< 0,01 mm	< 2 ms
IWFM 12L9505/S35A	< 0,0005 mm (stat.) < 0,001 mm (dynam.)	< 0,005 mm	< 30 ms



Sd = 1 ... 2 mm



**general data**

mounting type	shielded
measuring distance Sd	1 ... 2 mm
reference distance	1,35 ... 1,65 mm
measuring speed	< 0,5 mm / ms
repeatability	< 0,02 mm
linearity error	± 80 µm
temperature coefficient	1 µm / (K mm)

**electrical data**

voltage supply range +Vs	15 ... 30 VDC
current consumption max.	20 mA
output circuit	voltage output
output signal	1 ... 9 VDC
load resistance	> 1000 Ohm
residual output ripple	< 0,5 % Vs
short circuit protection	yes
reverse polarity protection	yes

**mechanical data**

type	rectangular
housing material	brass nickel plated
dimension	12 mm
housing length	55 mm
connection types	cable

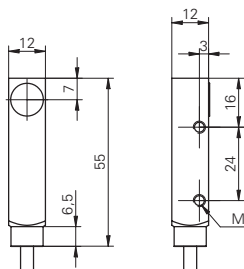
**ambient conditions**

operating temperature	0 ... +60 °C
protection class	IP 67

**order reference**

IWFM 12U9501/O1

**dimension drawing**



**connection diagram**

