



Sd = 0 ... 4 mm

ANALOG

- Very high resolution
- Short response time



general data

mounting type	shielded
measuring distance Sd	0 ... 4 mm
temperature drift	± 5 % (Full Scale)

electrical data

voltage supply range +Vs	15 ... 30 VDC
short circuit protection	yes
reverse polarity protection	yes

analog output 1

output circuit	voltage output
output signal	4 ... 20 mA
load resistance at +Vs min.	< 330 Ohm
load resistance at +Vs max.	< 1000 Ohm

analog output 2

output circuit	current output
output signal	0 ... 10 VDC
load resistance	> 1000 Ohm

mechanical data

type	rectangular
housing material	brass nickel plated
dimension	18 mm
housing length	30 mm
connection types	connector M8

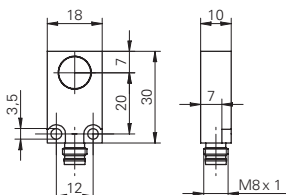
ambient conditions

operating temperature	-10 ... +70 °C
protection class	IP 67

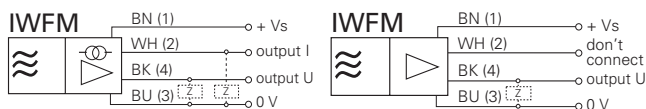
accessories

connectors	ESW 31A, ESG 32A
------------	------------------

dimension drawing



connection diagrams



Sd = 0 ... 4 mm

IWFM 18

Inductive distance measuring sensors *AlphaProx*

order reference	resolution	repeatability	output circuit	response time (factory characteristic)	linearity error	current consumption max.
IWFM 18L9504/S35A	0,001 mm (stat.) 0,005 mm (dynam.)	< 0,01 mm	voltage - / current output	< 2 ms	± 160 µm	40 mA
IWFM 18L9505/S35A	0,0005 mm (stat.) 0,001 mm (dynam.)	< 0,05 mm	voltage - / current output	< 30 ms	± 160 µm	40 mA
IWFM 18U7504/S35A	0,005 mm (stat.) 0,005 mm (dynam.)	< 0,01 mm	voltage output	< 2,5 ms	± 16 µm (linear)	20 mA