

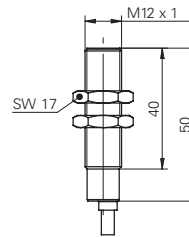


Sd = 1 ... 2 mm

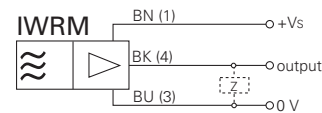


general data	
mounting type	shielded
measuring speed	< 0,5 mm / ms
repeatability	< 0,02 mm
temperature coefficient	1 µm / (K mm)
electrical data	
voltage supply range +Vs	14 ... 30 VDC
current consumption max.	20 mA
output circuit	voltage output
output signal	1 ... 9 VDC
load resistance	> 1000 Ohm
residual output ripple	< 0,5 % Vs
short circuit protection	yes
reverse polarity protection	yes
mechanical data	
type	cylindrical threaded
housing material	brass nickel plated
dimension	12 mm
housing length	50 mm
connection types	cable
ambient conditions	
operating temperature	0 ... +60 °C
protection class	IP 67

dimension drawing



connection diagram



order reference	measuring distance Sd	reference distance	linearity error
IWRM 12U9501	1 ... 2 mm	1,35 ... 1,65 mm	± 80 µm
IWRM 12U9502	1 ... 1,5 mm	1,15 ... 1,35 mm	± 60 µm

IWRM 12 Sd = 1 ... 2 mm Inductive distance measuring sensors AlphaProx



Sd = 0 ... 4 mm

ANALOG

- Large measuring distance
- Very high resolution
- Short response time



general data

mounting type	quasi shielded
measuring distance Sd	0 ... 4 mm
linearity error	± 160 µm
temperature drift	± 4% (Full Scale)

electrical data

voltage supply range +Vs	15 ... 30 VDC
short circuit protection	yes
reverse polarity protection	yes

voltage output

current consumption max.	20 mA
output signal	0 ... 10 VDC
load resistance	> 1000 Ohm

current output

output signal	4 ... 20 mA
load resistance +Vs min.	< 330 Ohm
load resistance +Vs max.	< 1000 Ohm

mechanical data

type	cylindrical threaded
housing material	brass nickel plated
dimension	12 mm
housing length	50 mm
connection types	connector M12

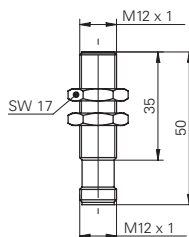
ambient conditions

operating temperature	-10 ... +70 °C
protection class	IP 67

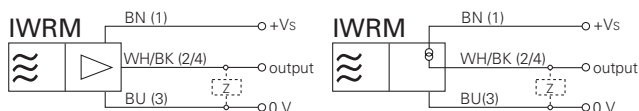
accessories

connectors	ES 14, ES 18, ESW 33S, ESG 34S
------------	--------------------------------

dimension drawing



connection diagrams



IWRM 12 Sd = 0 ... 4 mm

Inductive distance measuring sensors *AlphaProx*

order reference	resolution	repeatability	output circuit	response time (factory characteristic)
IWRM 12I9704/S14	< 0,001 mm (stat.) < 0,005 mm (dynam.)	< 0,01 mm	current output	< 2 ms
IWRM 12I9705/S14	< 0,001 mm (dynam.) < 0,0005 mm (stat.)	< 0,005 mm	current output	< 30 ms
IWRM 12U9704/S14	< 0,001 mm (stat.) < 0,005 mm (dynam.)	< 0,01 mm	voltage output	< 2 ms
IWRM 12U9705/S14	< 0,0005 mm (stat.) < 0,001 mm (dynam.)	< 0,005 mm	voltage output	< 30 ms