

Tw = 3 ... 150 mm

- subminiature housing
- line beam
- very short response time



general data

type	intensity difference
light source	pulsed red laser diode
sensing distance Tw	3 ... 150 mm
optimum operating distance	20 ... 40 mm
detectable remission difference (on grey)	> 8 %
repeatability	< 0,2 mm at laser focus
light indicator	LED yellow
power on indication	LED green
sensitivity adjustment	Pot, 5 turn
laser class	2
distance to laser focus	40 mm
wave length	675 nm

electrical data

response time / release time	< 0,05 ms
voltage supply range +Vs	10 ... 30 VDC
current consumption max.	50 mA
current consumption typ.	40 mA
voltage drop Vd	< 1,8 VDC
output function	light / dark operate
output current	< 100 mA
short circuit protection	yes
reverse polarity protection	yes

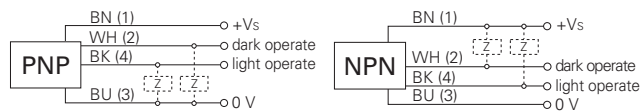
mechanical data

width / diameter	10,4 mm
height / length	27 mm
depth	16,3 mm
type	rectangular
housing material	plastic (ASA)
front (optics)	PMMA

ambient conditions

operating temperature	-10 ... +50 °C
-----------------------	----------------

connection diagrams



connectors

ESG 32AH0200	4 pin	2 m straight
ESW 31AH0200	4 pin	2 m angular

additional cable connectors and field wireable connectors, see accessories

accessories

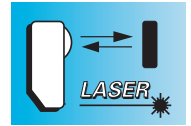
SENSOFIX mounting kit	150326
mounting bracket (cable type)	114501
mounting bracket (connector type)	133792

for details, see accessories section

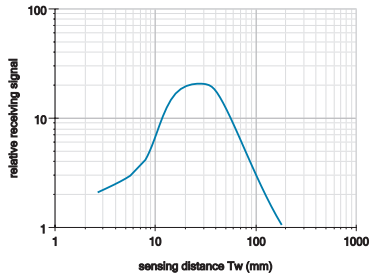
laser warning



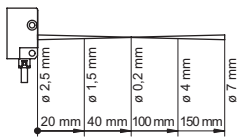
order reference	connection types	output circuit	protection class
OZDK 10N5101	cable 4 pin	NPN	IP 65
OZDK 10N5101/S35A	connector M8, 4 pin	NPN	IP 67
OZDK 10P5101	cable 4 pin	PNP	IP 65
OZDK 10P5101/S35A	connector M8, 4 pin	PNP	IP 67



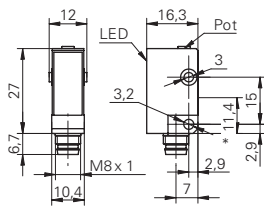
relative receiving signal



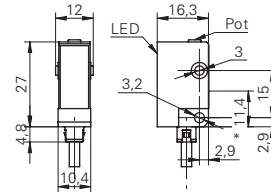
beam characteristic



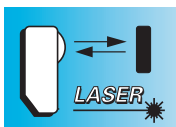
dimension drawings



* emitter axis



* emitter axis



Tw = 3 ... 150 mm

- subminiature housing
- high repeatability
- very short response time



general data

type	intensity difference
version	line beam
light source	pulsed red laser diode
sensing distance Tw	3 ... 150 mm
optimum operating distance	35 ... 45 mm
repeatability	< 0,2 mm at laser focus
light indicator	LED yellow
power on indication	LED green
sensitivity adjustment	Pot, 5 turn
laser class	2
distance to laser focus	40 mm
wave length	675 nm

electrical data

response time / release time	< 0,05 ms
voltage supply range +Vs	10 ... 30 VDC
current consumption max.	50 mA
current consumption typ.	40 mA
voltage drop Vd	< 1,8 VDC
output function	light / dark operate
output current	< 100 mA
short circuit protection	yes
reverse polarity protection	yes

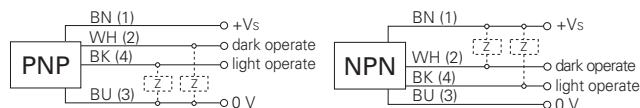
mechanical data

width / diameter	10,4 mm
height / length	27 mm
depth	16,3 mm
type	rectangular
housing material	plastic (ASA)
front (optics)	PMMA

ambient conditions

operating temperature	-10 ... +50 °C
-----------------------	----------------

connection diagrams



connectors

ESG 32AH0200	4 pin	2 m straight
ESW 31AH0200	4 pin	2 m angular

additional cable connectors and field wireable connectors, see accessories

accessories

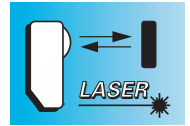
SENSOFIX mounting kit	150326
mounting bracket (cable type)	114501
mounting bracket (connector type)	133792

for details, see accessories section

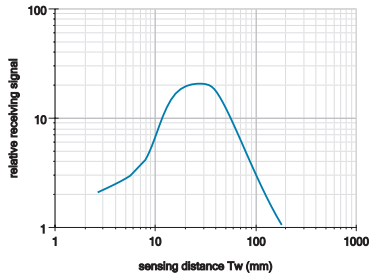
laser warning



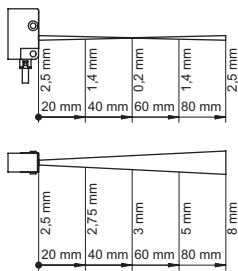
order reference	connection types	output circuit	protection class
OZDK 10N5150	cable 4 pin	NPN	IP 65
OZDK 10N5150/S35A	connector M8, 4 pin	NPN	IP 67
OZDK 10P5150	cable 4 pin	PNP	IP 65
OZDK 10P5150/S35A	connector M8, 4 pin	PNP	IP 67



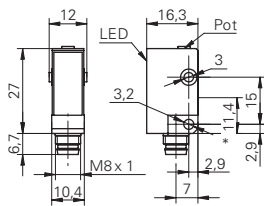
relative receiving signal



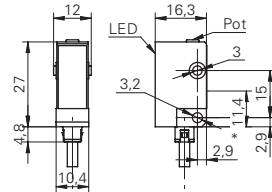
beam characteristic



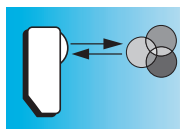
dimension drawings



* emitter axis



* emitter axis



Tw = 3 ... 150 mm

- subminiature housing
- high repeatability
- very short response time

general data

type	diffuse contrast sensor
light source	pulsed red laser diode
sensing distance Tw	3 ... 150 mm
optimum operating distance	20 ... 40 mm
detectable remission difference (on grey)	> 8 %
repeatability	< 0,2 mm at laser focus
light indicator	LED yellow
power on indication	LED green
sensitivity adjustment	Pot, 5 turn
laser class	2
distance to laser focus	40 mm
wave length	675 nm

electrical data

response time / release time	< 0,05 ms
voltage supply range +Vs	10 ... 30 VDC
current consumption max.	50 mA
current consumption typ.	40 mA
voltage drop Vd	< 1,8 VDC
output function	light / dark operate
output current	< 100 mA
short circuit protection	yes
reverse polarity protection	yes

mechanical data

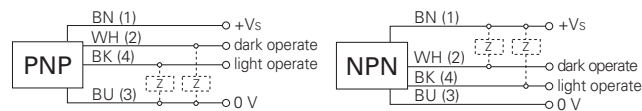
width / diameter	10,4 mm
height / length	27 mm
depth	16,3 mm
type	rectangular
housing material	plastic (ASA)
front (optics)	PMMA

ambient conditions

operating temperature	-10 ... +50 °C
-----------------------	----------------



connection diagrams



connectors

ESG 32AH0200	4 pin	2 m straight
ESW 31AH0200	4 pin	2 m angular

additional cable connectors and field wireable connectors, see accessories

accessories

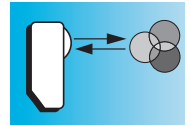
SENSOFIX mounting kit	150326
mounting bracket (cable type)	114501
mounting bracket (connector type)	133792

for details, see accessories section

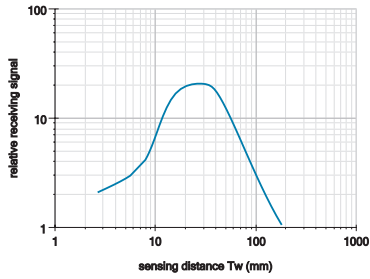
laser warning



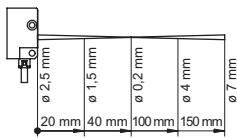
order reference	connection types	output circuit	protection class
OZDK 10N5101	cable 4 pin	NPN	IP 65
OZDK 10N5101/S35A	connector M8, 4 pin	NPN	IP 67
OZDK 10P5101	cable 4 pin	PNP	IP 65
OZDK 10P5101/S35A	connector M8, 4 pin	PNP	IP 67



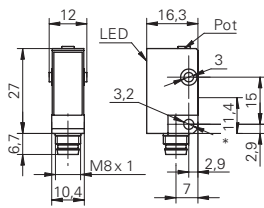
relative receiving signal



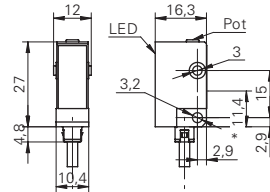
beam characteristic



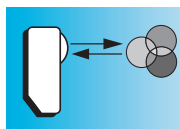
dimension drawings



* emitter axis



* emitter axis



Tw = 3 ... 150 mm

- subminiature housing
- high repeatability
- very short response time



general data

type	diffuse contrast sensor
version	line beam
light source	pulsed red laser diode
sensing distance Tw	3 ... 150 mm
optimum operating distance	35 ... 45 mm
repeatability	< 0,2 mm at laser focus
light indicator	LED yellow
power on indication	LED green
sensitivity adjustment	Pot, 5 turn
laser class	2
distance to laser focus	40 mm
wave length	675 nm

electrical data

response time / release time	< 0,05 ms
voltage supply range +Vs	10 ... 30 VDC
current consumption max.	50 mA
current consumption typ.	40 mA
voltage drop Vd	< 1,8 VDC
output function	light / dark operate
output current	< 100 mA
short circuit protection	yes
reverse polarity protection	yes

mechanical data

width / diameter	10,4 mm
height / length	27 mm
depth	16,3 mm
type	rectangular
housing material	plastic (ASA)
front (optics)	PMMA

ambient conditions

operating temperature	-10 ... +50 °C
-----------------------	----------------

connection diagrams



connectors

ESG 32AH0200	4 pin	2 m straight
ESW 31AH0200	4 pin	2 m angular

additional cable connectors and field wireable connectors, see accessories

accessories

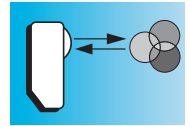
SENSOFIX mounting kit	150326
mounting bracket (cable type)	114501
mounting bracket (connector type)	133792

for details, see accessories section

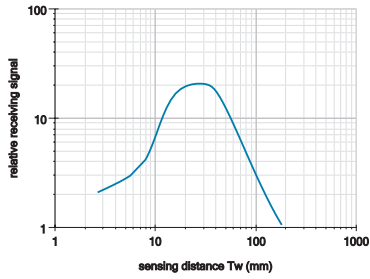
laser warning



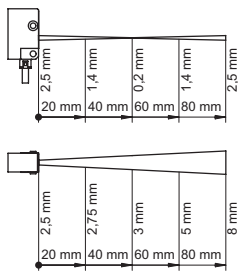
order reference	connection types	output circuit	protection class
OZDK 10N5150	cable 4 pin	NPN	IP 65
OZDK 10N5150/S35A	connector M8, 4 pin	NPN	IP 67
OZDK 10P5150	cable 4 pin	PNP	IP 65
OZDK 10P5150/S35A	connector M8, 4 pin	PNP	IP 67



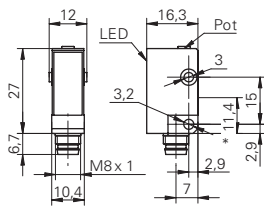
relative receiving signal



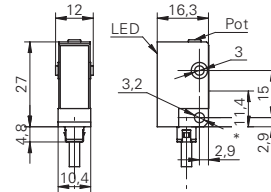
beam characteristic



dimension drawings



* emitter axis



* emitter axis